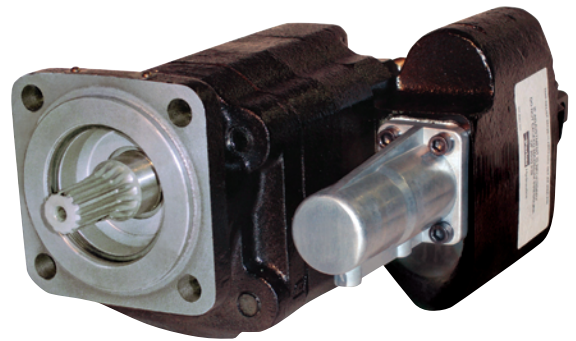
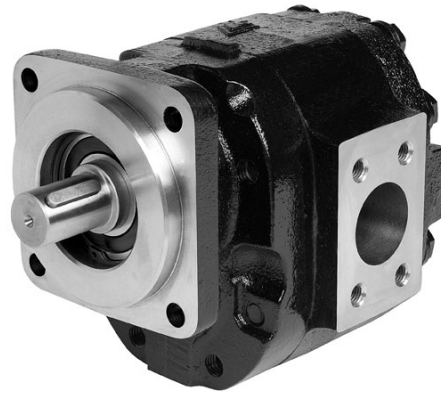




aerospace  
 climate control  
 electromechanical  
 filtration  
 fluid & gas handling  
 hydraulics  
 pneumatics  
 process control  
 sealing & shielding



# Gear Pump Division Parts Book Catalog



ENGINEERING YOUR SUCCESS.

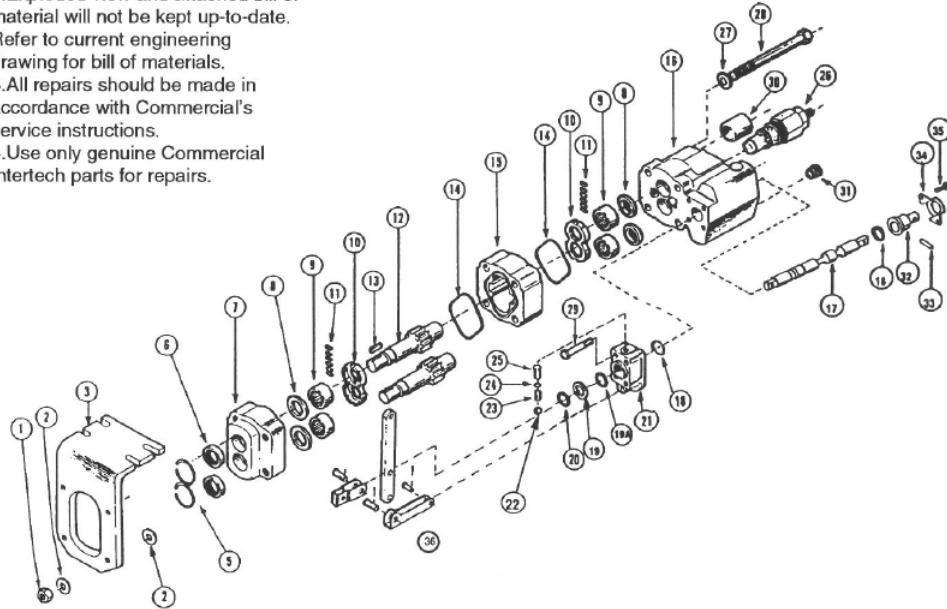


# C101/ Parts List

## parts list

### CAUTION;

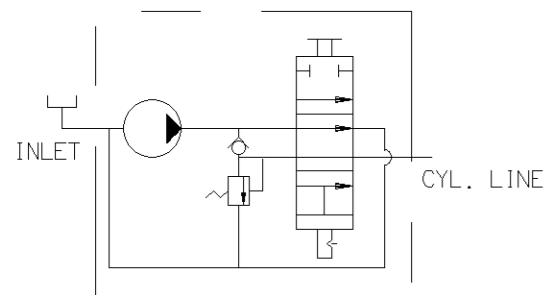
1. Exploded view may not be pictorially correct and is not to scale.
2. Exploded view and attached bill of material will not be kept up-to-date.
- Refer to current engineering drawing for bill of materials.
3. All repairs should be made in accordance with Commercial's service instructions.
4. Use only genuine Commercial Intertech parts for repairs.



Item	Description	Part No.	Req.		
				18	"O" Ring 391-2881-103 2
				19A	Wiper Ring 391-2883-147 1
				19	Retainer Ring 391-3782-126 1
				20	Snap Ring 391-2688-003 1
				21	Detent Cap 314-0100-003 1
				22	Detent Ball 391-0282-009 1
				23	Detent Spring 391-3581-383 1
				24	Lock Washer 391-3788-002 1
				25	Detent Retainer 391-2583-079 1
				26	Relief Valve 355-9001-067 1
				27	Washer 391-3784-029 4
				28	Cap Screw 2" units 391-1401-111 4
					2-1/2" units 391-1401-110 4
				29	Cap Screw 391-1401-082 4
				30	Sleeve 391-3283-052 1
				31	Pipe Plug-1" NPT 391-2282-006 1
				32	Spool End Cap 391-1881-073 1
				33	Spiral Pin 391-2085-009 1
				34	Bracket 391-0981-010 1
				35	Skt Hd. Cap Screw 391-1402-063 2
				36	Handle Ass'y. (opt) 355-9100-009 1
1	Hex Nut	391-1451-076	4		
2	Washer	391-3784-028	8		
3	Bracket (optional)	314-0100-005	1		
5	Snap Ring	391-2681-493	2		
6	Lip Seal	391-2883-096	2		
7	Shaft End Cover	314-5039-201	1		
8	Ring Seal	391-2585-009	4		
9	Roller Bearing	391-0381-059	4		
10	Thrust Plate	391-2185-016	2		
11	Pocket Seals	391-2882-050	12		
12	Gear Set 2" gears	314-2920-640	1		
	2-1/2" gears	314-2925-640	1		
13	Shaft Key	391-1781-021	1		
14	Gasket Seal	392-2884-021	2		
15	Gear Housing				
	2" gear	314-8020-100	1		
	2-1/2" gear	314-8025-100	1		
*16	Port End Cover		1		
*17	Valve Spool		1		

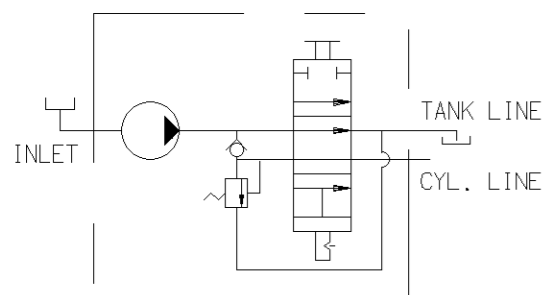
\*Items 16 and 17 are not serviceable parts.

TWO-LINE INSTALLATION

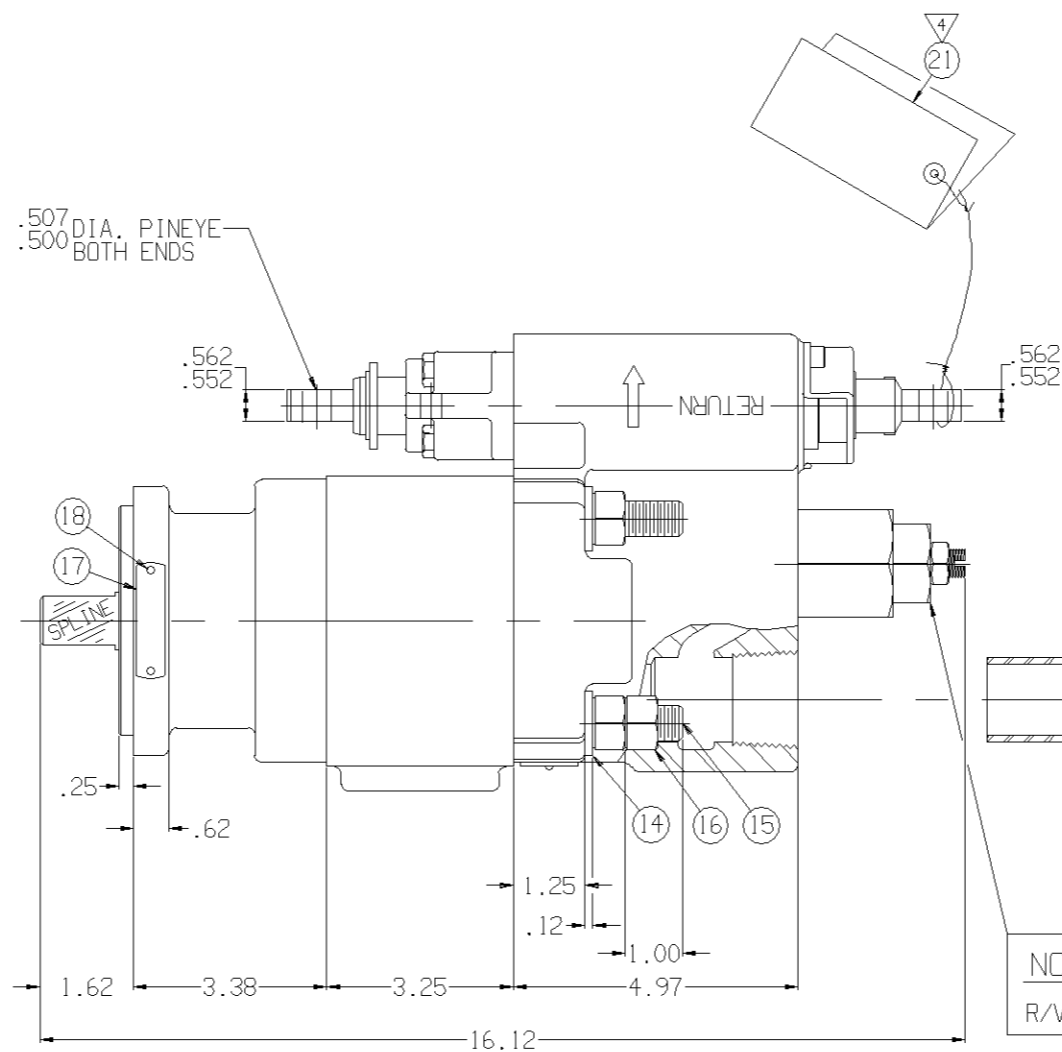


C102

THREE-LINE INSTALLATION

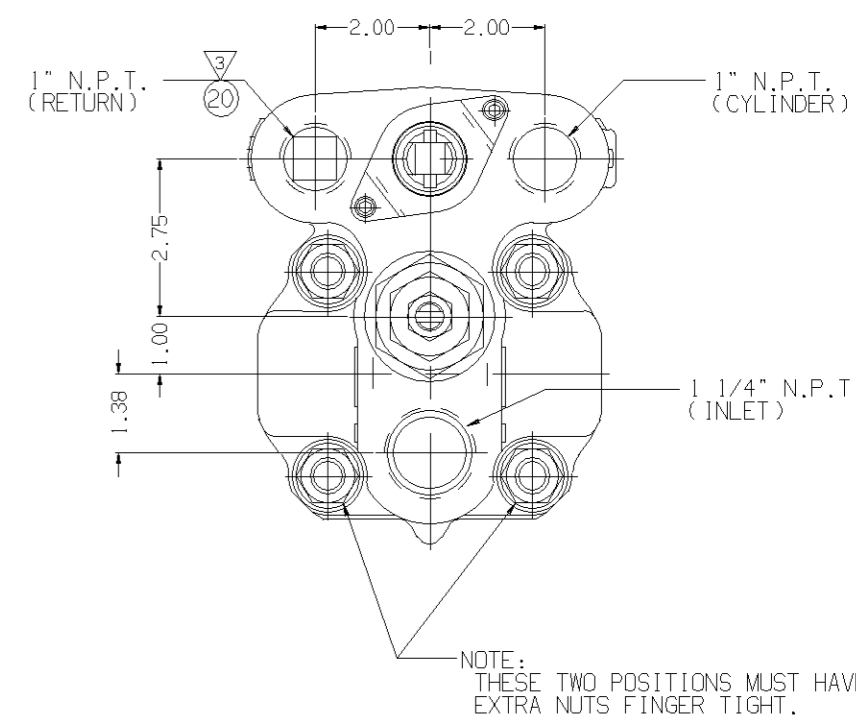


SAE INVOLUTE SPLINE  
13 TEETH - 16/32 PITCH  
FLAT ROOT SIDE FIT  
MAJOR DIA. .853-.858  
MINOR DIA. .7335 MAX.



NOTE:  
ATTACH SLEEVE TO PUMP  
(DO NOT INSTALL IN PORT)

NOTE:  
R/V SET @ 2000 PSI ±100 PSI

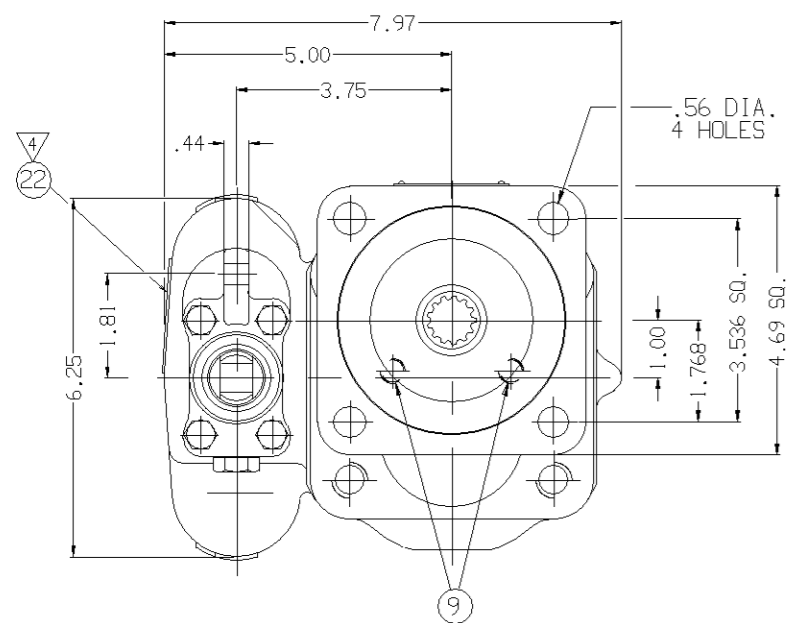


NOTES:

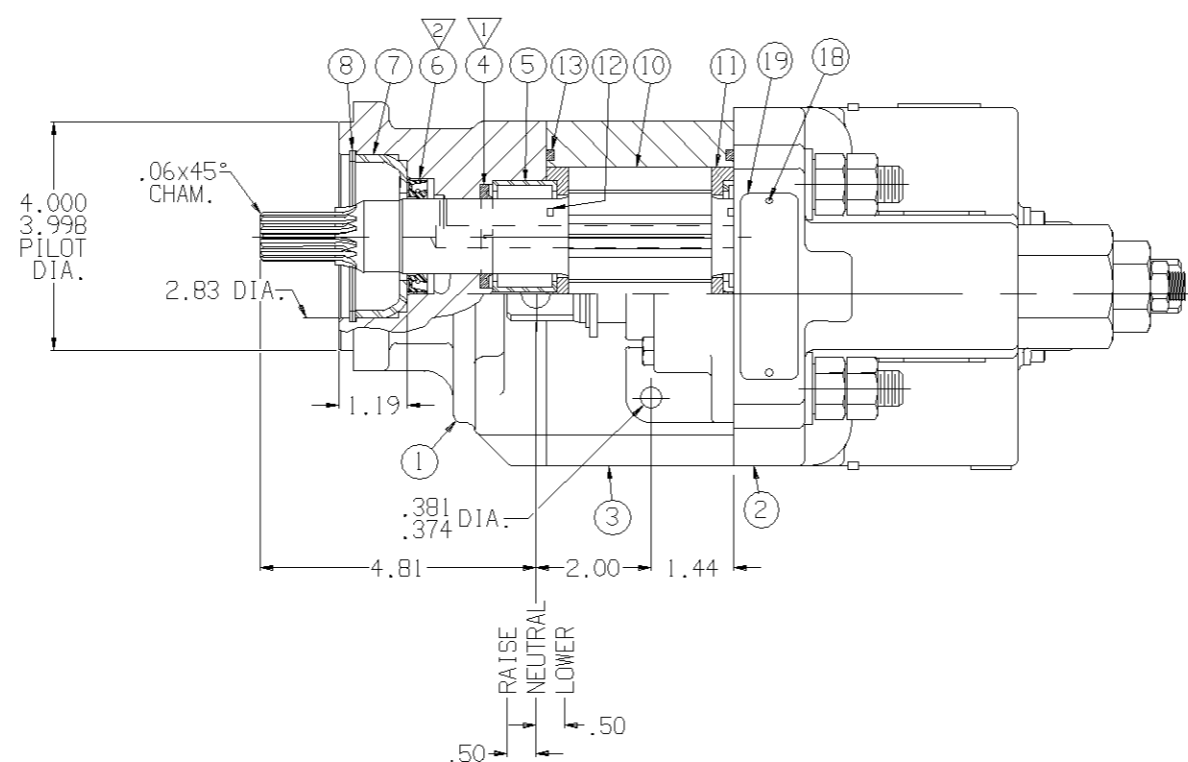
- ▽ ASSEMBLE RING SEALS. ITEM #4. WITH SLOT FACING GEAR AS SHOWN.
- ▽ LIP SEAL. ITEM #6. MUST BE PRESSED FLUSH WITH TOP FACE OF COUNTERBORE AS SHOWN. FOR ADHESIVE INSTRUCTIONS SEE H.E. STD. 35-21.
- ▽ TORQUE PIPE PLUG. ITEM #20. TO 1320 ±50 IN-LBS. FOR ADHESIVE INSTRUCTIONS SEE H.E. STD. 35-20.1.
- ▽ WARNING TAGS MUST BE ON EVERY ASSEMBLY.

CUSTOMER NOTE:

- ▽ IF INSTALLATION REQUIREMENT IS FOR "3 LINE" APPLICATION. SLEEVE FOR INLET PORT. PART NO. 391 3283 052. ITEM #23. MUST BE USED AND RETURN PORT PLUG. ITEM #20. MUST BE REMOVED.
- ▽ UNIT CAN BE DIRECT MOUNTED TO P.T.O., BUT MUST BE EXTERNALLY SUPPORTED TO TRANSMISSION. LONG MOUNTING STUDS AND EXTRA NUTS PROVIDED WITH EACH UNIT FOR THIS PURPOSE.



THIS UNIT ASSEMBLED FOR C.C.W. ROTATION



ITEM	PART NO	REQ'D	DESCRIPTION
23	391 3283 052	1	SLEEVE
22	391 4061 026	1	TAG
21	391 4061 054	1	TAG
20	391 2282 006	1	PIPE PLUG 1" N.P.T.
19	391 2181 999	1	NAME PLATE
18	391 1432 004	4	DRIVE SCREW
17	391 2181 074	1	ROTATION PLATE
16	391 1451 076	6	HEX NUT
15	391 1425 432	4	STUD
14	391 3784 029	4	WASHER
13	391 2884 021	2	GASKET SEAL
12	391 2882 050	12	POCKET SEAL
11	391 2185 012	2	THRUST PLATE
10	313 2925 130	1	SET. GEAR
9	391 3681 001	2	CHECK ASSEMBLY
8	391 2686 065	1	SNAP RING
7	391 3383 087	1	SEAL RETAINER
6	391 2883 115	1	LIP SEAL
5	391 0381 059	2	ROLLER BEARING
4	391 2585 009	1	RING SEAL
3	314 8025 100	1	HOUSING. GEAR
2	314 9414 009	1	HOUSING. PEC
1	313 5033 435	1	HOUSING. SEC

TEST PUMP/VALVE PER TEST SPEC'S  
DWG. NO. 314 9310 001TS

THIS DOCUMENT CONTAINS INFORMATION THAT IS CONFIDENTIAL AND PROPRIETARY TO PARKER-HANNIFIN CORPORATION. IT IS THE PROPERTY OF PARKER-HANNIFIN CORPORATION. IT IS TO BE USED ONLY FOR THE PURPOSES AND IN THE MANNER SPECIFIED BY THE INFORMATION IN THIS DOCUMENT. IT IS NOT TO BE COPIED OR DISCLOSED TO OTHERS WITHOUT THE WRITTEN PERMISSION OF PARKER-HANNIFIN CORPORATION. BUSINESS WITH PARKER AND WILL BE REFUSED AND ALL PARKER USE DISCONTINUED UPON REQUEST BY PARKER. ALL RIGHTS RESERVED.

C102D-25-1.PMP+V-1GR25-4BFLG-BSPLN-CCW		PARKER-HANNIFIN CORP. GEAR PUMP DIVISION YOUNGSTOWN, OH 44501 USA	
ADM CTR	P	TOLERANCES UNLESS OTHERWISE SPECIFIED	DR. BY DATE CH. BY DATE SCALE
REV	000000	* DIMENSIONS	BT 090304 MJH 090604 1/2
DATE			314 9325 229
DIMENSIONS ARE INCH			
© 2004 PARKER-HANNIFIN CORPORATION			

EXP. NO.
FIRST USED 04-08-4047
314 9325 229

SYM. REVISIONS

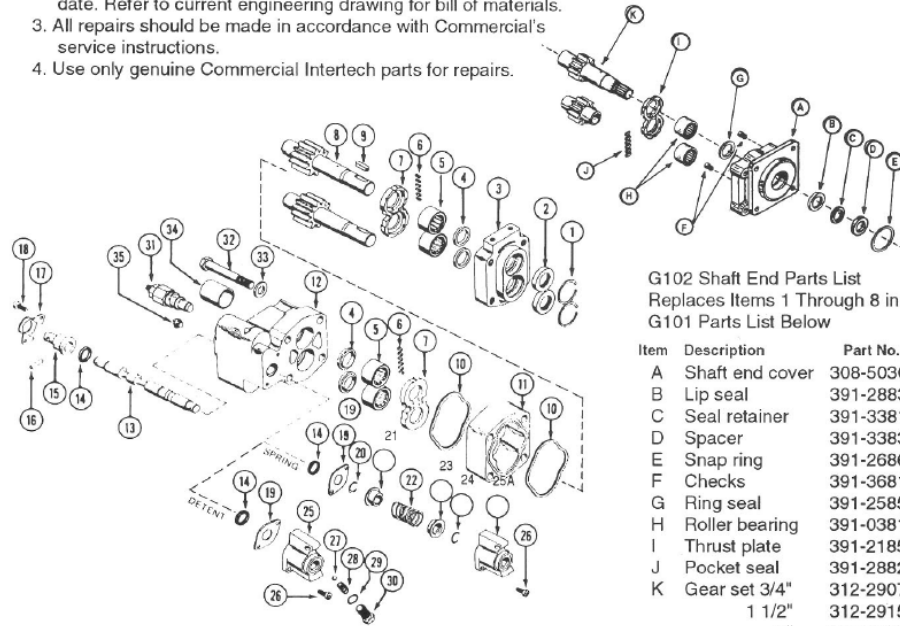


# G101/G102 Parts List

## parts list G101 and G102 Models

### Caution:

1. Exploded view is not to scale and may not be pictorially correct.
2. Exploded view and attached parts list will not be kept up to date. Refer to current engineering drawing for bill of materials.
3. All repairs should be made in accordance with Commercial's service instructions.
4. Use only genuine Commercial Intertech parts for repairs.



G102 Shaft End Parts List  
Replaces Items 1 Through 8 in  
G101 Parts List Below

Item	Description	Part No.	Req.
A	Shaft end cover	308-5030-201	1
B	Lip seal	391-2883-119	1
C	Seal retainer	391-3381-040	1
D	Spacer	391-3383-069	1
E	Snap ring	391-2686-063	1
F	Checks	391-3681-001	2
G	Ring seal	391-2585-006	2
H	Roller bearing	391-0381-068	4
I	Thrust plate	391-2185-013	2
J	Pocket seal	391-2882-086	12
K	Gear set 3/4"	312-2907-130	1
	1 1/2"	312-2915-130	1
	2"	312-2920-130	1

### G101 Parts List

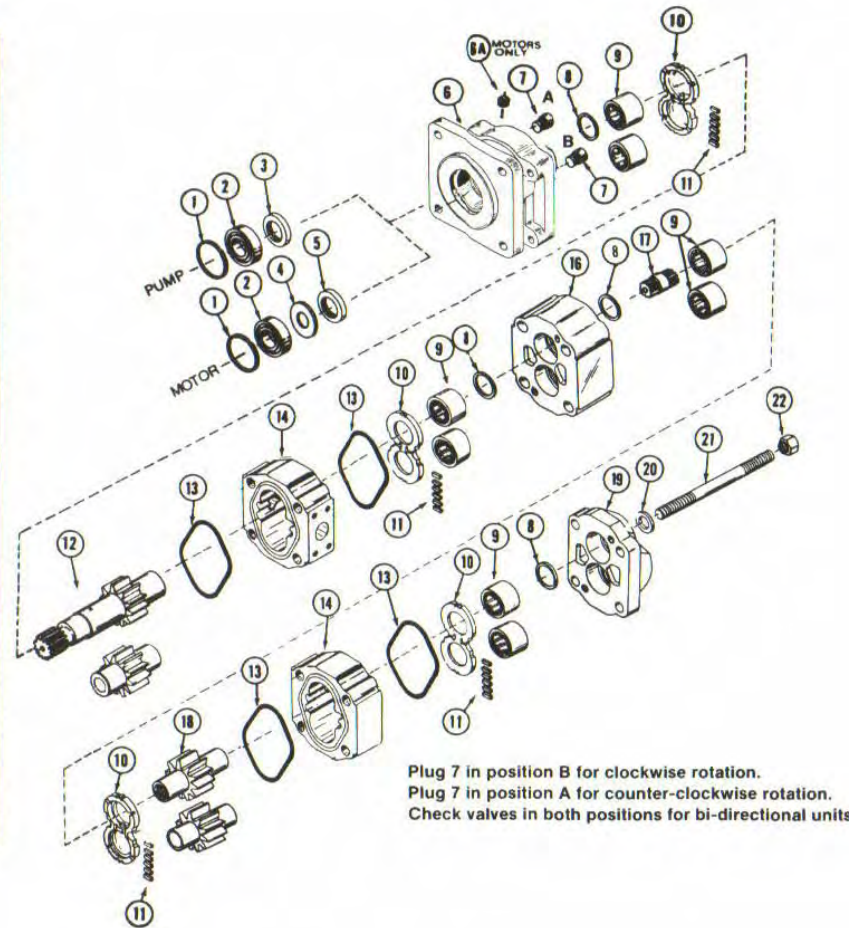
Item	Description	Part No.	Req.	Item	Description	Part No.	Req.	Item	Description	Part No.	Req.
1	Snap Ring	391-2681-487	2	14	Quad Ring Seal	391-1985-014	2	29	Lock Washer	391-3788-002	1
2	Lip Seal	391-2883-119	2	15	Spool End Cap	391-1881-072	1	30	Detent Retainer	391-2583-079	1
3	Shaft End Cover	308-5016-201	1	16	Spiral Pin	391-2085-009	1	31	Relief Valve	355-9001-197	1
4	Ring Seal	391-2585-006	4	17	Bracket	391-0981-007	1	32	Cap Screw 3/4"	391-1401-395	4
5	Roller Bearing	391-0381-068	4	18	Skt Hd Cap Screw	391-1402-063	2		1 1/2"	391-1401-381	4
6	Pocket Seal	391-2882-086	12	19	Cover Plate	391-2183-124	1		2"	391-1401-382	4
7	Thrust Plate	391-2185-013	2	20	Retaining Ring	391-2681-485	1	33	Washer	391-3782-146	4
8	Gear Set 3/4"	312-2907-842	1 set	21	Spring Guide	391-1642-136	1	34	Sleeve (Optional)	391-3283-052	1
	1 1/2"	312-2915-842	1 set	22	Spring	391-3581-212	1	35	Pipe Plug	391-2282-003	1
	2"	312-2920-842	1 set	23	Spring Guide	391-1642-137	1				
9	Key	391-1781-021	1	24	Retaining Ring	391-2681-486	1				
10	Gasket Seal	391-2884-019	2	25A	End Cap	308-4000-100	1				
11	Gear Housing 3/4"	308-8007-901	1 or	25	End Cap	308-4000-102	1				
	1 1/2"	308-8015-901	1 or	26	Cap Screw	391-1433-020	2				
	2"	308-8020-901	1	27	Detent Ball	391-0282-009	1				
12	Port End Cover		1	28	Spring	391-3581-383	1				
13	Spool		1								

Items 12 and 13 are not serviceable

# PGP/PGM020 Pumps and Motors

## PGP/PGM020 Standard Parts List

Item No.	Description	Required	Ten Digit No. (TDN)
1	Snap Ring	1	391-2686-063
2	Outboard Bearing	1	391-0381-040
	Outboard Spacer	1	391-3383-069
3	Lip Seal (pump)	1	391-2883-058
4	Seal Retainer (motor)	1	391-3381-040
5	Lip Seal (motor)	1	391-2883-119
6	Shaft End Cover	1	308-50XX-XXX
6A	Drain Plug (motor)	1	391-2282-XXX
7	Check Assemblies for Motors & Bi-Rotational Pumps	2	391-3681-001
	Plugs (pumps only)	1	391-2286-004
8	Ring Seals (per gear section)	2	391-2585-006
9	Roller Bearings (per gear section)	4	391-0381-906
	Thrust plates (motor) (per gear section)	2	391-2185-913
10	Thrust plates (pump) (per gear section)	2	391-2185-913
	Pocket Seals (per gear section)	1 strip	391-2882-022 (Viton) 391-2882-051 (Buna)
12	Drive Shaft Gear Set	1 Set	312-29XX-XXX
13	Gasket Seals (per gear section)	2	391-2884-019
14	Gear Housing	1	308-8XXX-XXX
16	Bearing Carrier	-	308-7XXX-XXX
17	Connecting Shaft	-	312-1133-001
18	Gear Set	set	312-28XX-XXX
19	Port End Cover	1	308-3XXX-XXX
20	Washers	4	391-3782-146
21	Cap Screws (single units)	4	391-1401-XXX
	Studs (multiple units)	4	391-1425-XXX
22	Nuts (multiple units)	4	391-1451-115

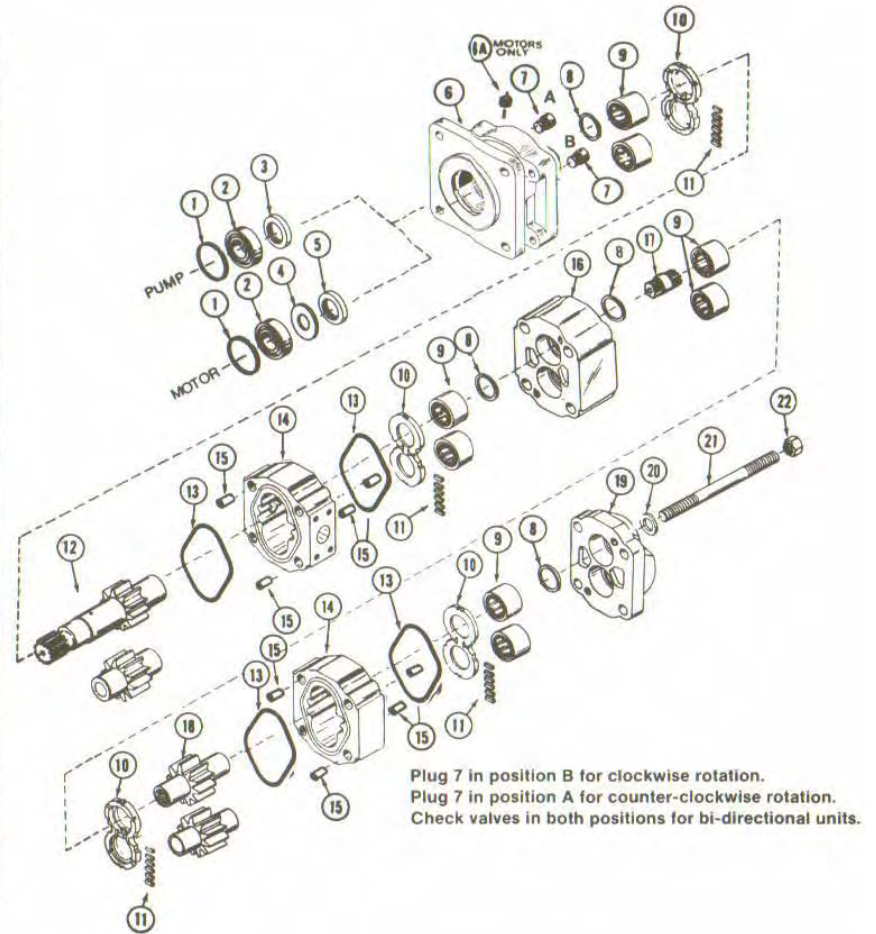


**Parker Hannifin Corporation**  
 Gear Pump Division  
 1775 Logan Avenue, Youngstown, OH 44501 USA  
 Tel: (330) 746-8011 • Fax: (330) 746-1148  
<http://www.parker.com/gearpumps>

# PGP/PGM030/031 Pumps and Motors

## PGP/PGM030/031 Standard Parts List

Item No.	Description	Required	Ten Digit No. (TDN)
1	Snap Ring	1	391-2686-063
2	Outboard Bearing	1	391-0381-040
	Outboard Spacer	1	391-3383-069
3	Lip Seal (pump)	1	391-2883-058
4	Seal Retainer (motor)	1	391-3381-040
5	Lip Seal (motor)	1	391-2883-119
6	Shaft End Cover	1	312-50XX-XXX
6A	Drain Plug (motor)	1	391-2282-XXX
7	Check Assemblies for Motors & Bi-Rotational Pumps	2	391-3681-001
	Plugs (pumps only)	1	391-2286-004
8	Ring Seals (per gear section)	2	391-2585-006
9	Roller Bearings (per gear section)	4	391-0381-906
10	Thrust plates (motor) (per gear section)	2	391-2185-913
	Thrust plates (pump) (per gear section)	2	391-2185-931
11	Pocket Seals (per gear section)	1 strip	391-2882-022 (Viton) 391-2882-051 (Buna)
	Drive Shaft Gear Set	1 Set	312-29XX-XXX
13	Gasket Seals (per gear section)	2	391-2884-050
14	Gear Housing	1	312-8XXX-XXX
15	Dowel Pins (series 31) (per gear section)	4	391-2082-032
	Bearing Carrier	-	312-7XXX-XXX
17	Connecting Shaft	-	312-1133-001
18	Gear Set	set	312-28XX-XXX
19	Port End Cover	1	312-3XXX-XXX
20	Washers	4	391-3784-028
21	Cap Screws (single units)	4	391-1401-XXX
	Studs (multiple units)	4	391-1425-XXX
22	Nuts (multiple units)	4	391-1451-076



**Parker Hannifin Corporation**

Gear Pump Division

1775 Logan Avenue, Youngstown, OH 44501 USA

Tel: (330) 746-8011 • Fax: (330) 746-1148

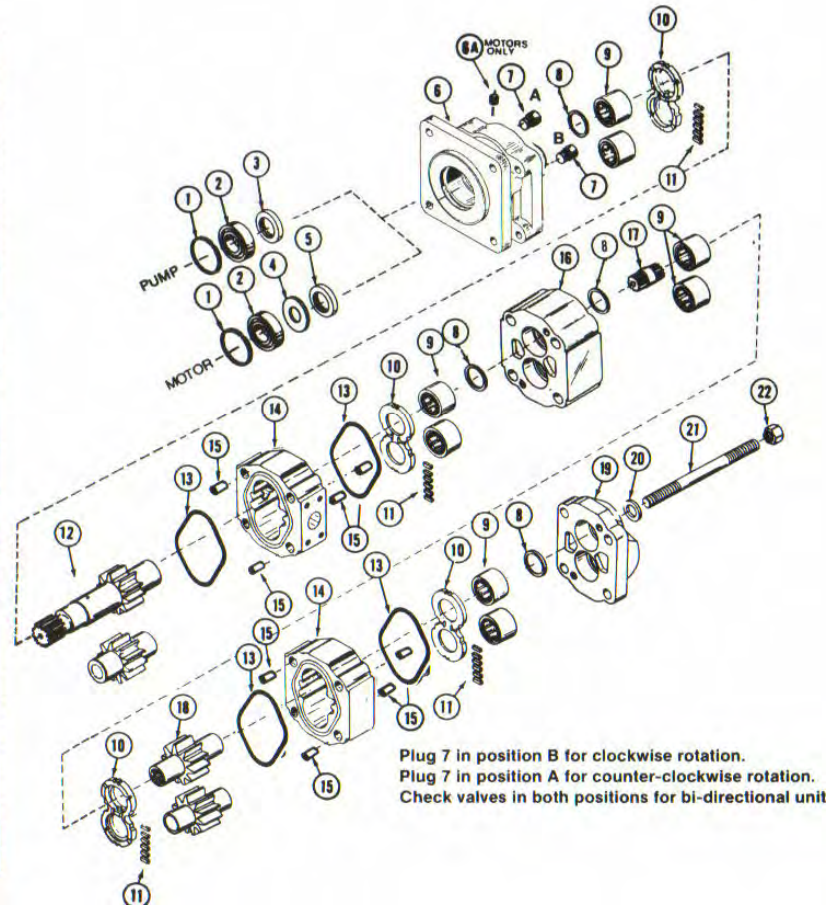
<http://www.parker.com/gearpump>



## PGP/PGM050/051 Pumps and Motors

### PGP/PGM050/051 Standard Parts List

Item No.	Description	Required	Ten Digit No. (TDN)
1	Snap Ring	1	391-2686-065
2	Outboard Bearing	1	391-0381-077
	Outboard Spacer	1	391-3383-087
3	Lip Seal (pump)	1	391-2883-103
4	Seal Retainer (motor)	1	391-3383-020
5	Lip Seal (motor)	1	391-2883-115
6	Shaft End Cover	1	313-50XX-XXX
6A	Drain Plug (motor)	1	391-2282-XXX
7	Check Assemblies for Motors & Bi-Rotational Pumps	2	391-3681-001
	Plugs (pumps only)	1	391-2286-004
8	Ring Seals (per gear section)	2	391-2585-009
9	Roller Bearings (per gear section)	4	391-0381-905
10	Thrust plates (motor) (per gear section)	2	391-2185-912
	Thrust plates (pump) (per gear section)	2	391-2185-929
11	Pocket Seals (per gear section)	1 strip	391-2882-022 (Viton) 391-2882-051 (Buna)
12	Drive Shaft Gear Set	1 Set	313-29XX-XXX
13	Gasket Seals (per gear section)	2	391-2884-021
14	Gear Housing	1	313-8XXX-XXX
15	Dowel Pins (series 51) (per gear section)	4	391-2082-032
16	Bearing Carrier	-	313-7XXX-XXX
17	Connecting Shaft	-	313-1133-001
18	Gear Set	set	313-28XX-XXX
19	Port End Cover	1	313-3XXX-XXX
20	Washers	4	391-3784-028
21	Cap Screws (single units)	4	391-1401-XXX
	Studs (multiple units)	4	391-1425-XXX
22	Nuts (multiple units)	4	391-1451-076

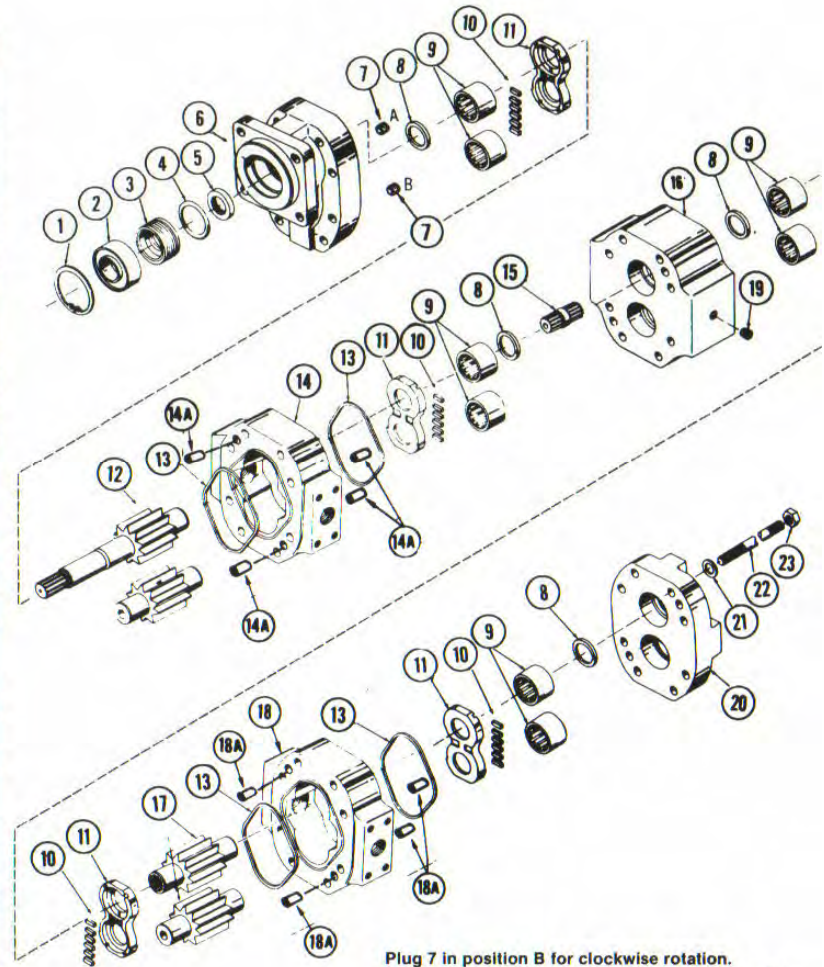




## PGP/PGM075/076 Pumps and Motors

### PGP/PGM075/076 Standard Parts List

Item No.	Description	Required	Ten Digit No. (TDN)
1	Snap Ring	1	391-2686-025
2	Outboard Bearing	1	391-0381-078
	Outboard Spacer	1	391-3383-018
3	Seal Retainer (pump)	1	391-2584-082
	Seal Retainer (motor)	1	391-2584-051
4	O-Ring	1	391-2881-457
5	Lip Seal (pump)	1	391-2883-052
	Lip Seal (motor)	1	391-2883-094
6	Shaft End Cover	1	316-50XX-XXX
7	Check Assemblies for Motors & Bi-Rotational Pumps	2	391-3681-001
	Plugs (pumps only)	1	391-2286-004
8	Ring Seals (per gear section)	2	391-2585-011
9	Roller Bearings (per gear section)	4	391-0381-904
10	Pocket Seals (per gear section)	1 strip	391-2882-084
11	Thrust plates (motor) (per gear section)	2	391-2185-920
	Thrust plates (pump) (per gear section)	2	391-2185-926
12	Drive Shaft Gear Set	1	316-29XX-XXX
13	Gasket Seals (per gear section)	2	391-2884-024
14	Gear Housing	1	316-8XXX-XXX
14A	Dowel Pins (76 only) (per gear section)	4	391-2082-033
15	Connecting Shaft	-	316-1133-001
16	Bearing Carrier	-	316-7XXX-XXX
17	Gear Set	set	316-28XX-XXX
18	Gear Housing	1	316-8XXX-XXX
18A	Dowel Pins (76 only) (per gear section)	4	391-2082-033
19	Plug	1	391-2281-010
20	Port End Cover	1	316-3XXX-XXX
21	Washers	8	391-3784-028
22	Cap Screws (single units)	8	391-1401-XXX
	Studs (multiple units)	8	391-1425-XXX
23	Nuts (multiple units)	8	391-1451-076



Plug 7 in position B for clockwise rotation.  
 Plug 7 in position A for counter-clockwise rotation.  
 Check valves in both positions for bi-directional units

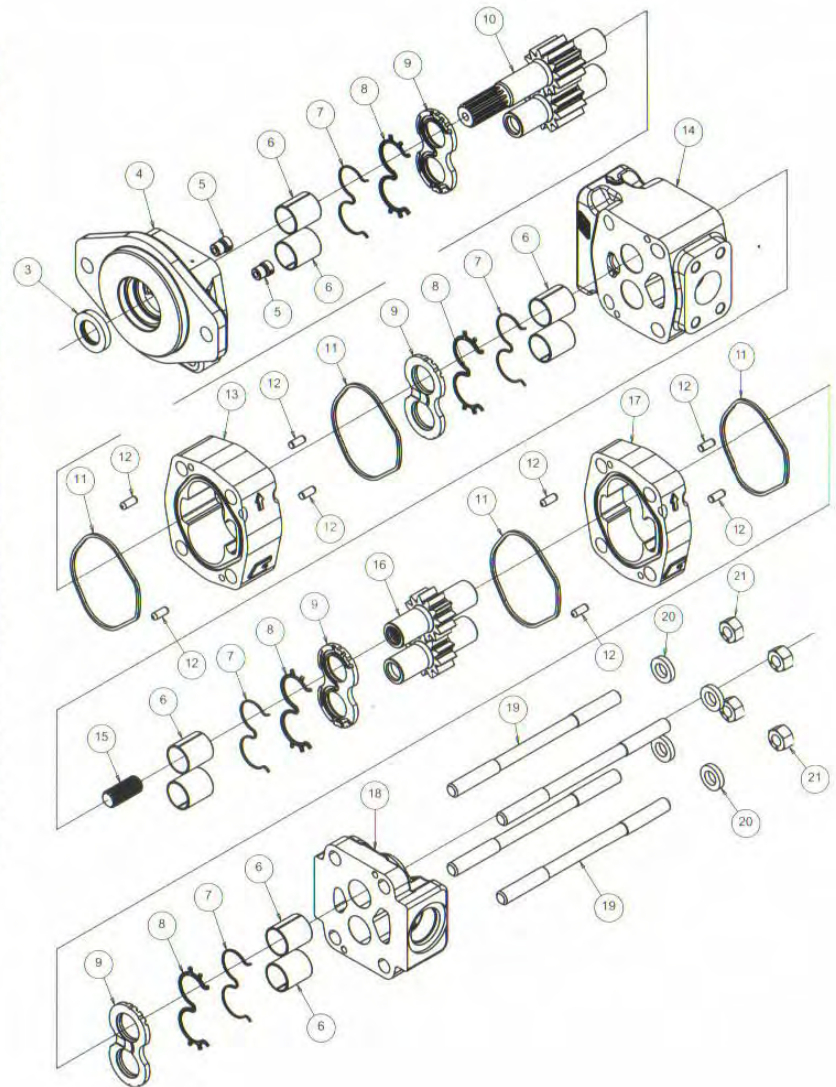


# PGP/PGM 315 Pumps and Motors

## PGP/PGM 315 Standard Parts List

Item No.	Description	Required	Ten Digit No. (TDN)
1	Snap Ring	N/A	
2	Outboard Bearing	N/A	
3	Seal — pump	1	391-2883-151
	Seal — motor	1	391-2883-156
4	Shaft End Cover	1	326-50XX-XXX*
5	Checks — motor	2	391-3681-001
6	Bushings	4	391-0482-195
7	Seals — pump-per section	2	391-2883-169 (back-up seal)
8		2	391-2883-168 (channel seal)
7	Seals — motor-per section	2	391-2881-995 (back-up seal)
8		4	391-2881-996 (end channel seal)
		4	391-2881-997 (side channel seal)
9	Thrust Plates — pump	2	391-2185-963
	Thrust Plates — motor	2	391-2185-970
10	Gear Set	1	326-29XX-XXX*
11	Gasket Seal — pump	2	391-2881-968
	Gasket Seal — motor	2	391-2881-429
12	Dowel Pins	4	391-2082-071
13	Gear Housing — pump	1	326-81XX-100*
	Gear Housing — motor	1	326-82XX-100*
14	Bearing Carrier	1	326-7XXX-XXX*
15	Connecting Shaft	1	326-1133-001
16	Gear Set	1	326-28XX-XXX*
17	Gear Housing — pump	1	326-81XX-100*
	Gear Housing — motor	1	326-82XX-100*
18	Port End Cover	1	326-30XX-XXX*
19	Studs or Cap Screws		
	Studs	4	391-1426-XXX*
	Cap Screws	4	391-1401-XXX*
20	Washers	4	391-3782-132
21	Nuts	4	391-1451-051

\* = Varies depending upon gear width and/or configuration



**Parker Hannifin Corporation**

Gear Pump Division

1775 Logan Avenue, Youngstown, OH 44501 USA

Tel: (330) 746-8011 • Fax: (330) 746-1148

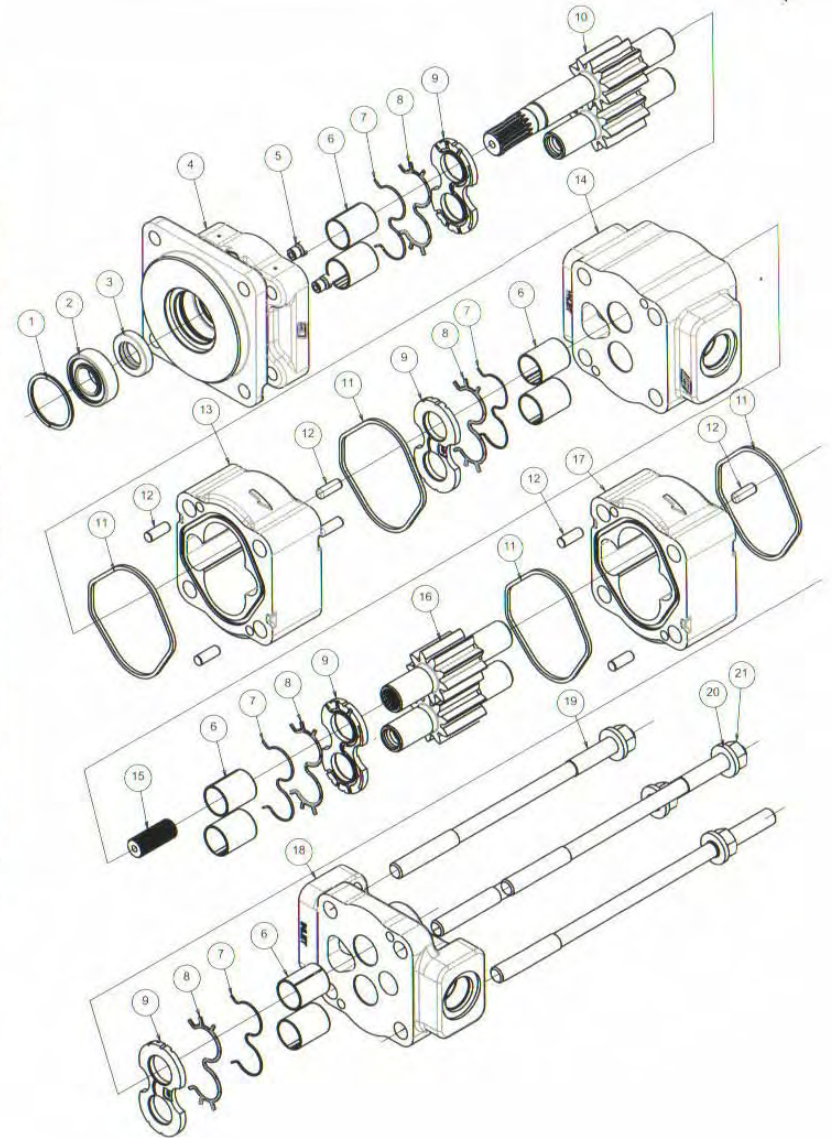
<http://www.parker.com/gearpump>

# PGP/PGM 330 Pumps and Motors

## PGP/PGM 330 Standard Parts List

Item No.	Description	Required	Ten Digit No. (TDN)
1	Snap Ring	1	391-2686-063
2	Outboard bearing	1	391-0381-040
3	Seal — pump	1	391-2883-058
	Seal — motor	1	391-2883-119
4	Shaft End Cover	1	324-50XX-XXX*
5	Plug/Checks — motor	2	391-3681-001
6	Bushings	4	391-0482-306
7	Seals — pump-per section	2	391-2883-167 (back-up seal)
		2	391-2883-166 (channel seal)
7	Seals — motor-per section	2	391-2881-929 (back-up seal)
		4	391-2881-930 (end channel seal)
		4	391-2881-931 (side channel seal)
9	Thrust plates — pump	2	391-2185-956
	Thrust plates — motor	2	391-2185-965
10	Gear Set	1	324-29XX-XXX*
11	Gasket Seal — pump	2	391-2884-050
	Gasket Seal — motor	2	391-2884-076
12	Dowel Pins	4	391-2082-032
13	Gear Housing — pump	1	324-81XX-100*
	Gear Housing — motor	1	324-82XX-100*
14	Bearing Carrier	1	324-7XXX-XXX*
15	Connecting Shaft	1	324-1133-001
16	Gear Set	1	324-28XX-XXX*
17	Gear Housing — pump	1	324-81XX-100*
	Gear Housing — motor	1	324-82XX-100*
18	Port End Cover	1	324-30XX-XXX*
19	Studs or Capscrews		
	studs	4	391-1425-XXX*
	capscrews	4	391-1401-XXX*
20	Washers	4	391-3784-028
21	Nuts	4	391-1451-076

\* = Varies depending upon gear width and/or configuration



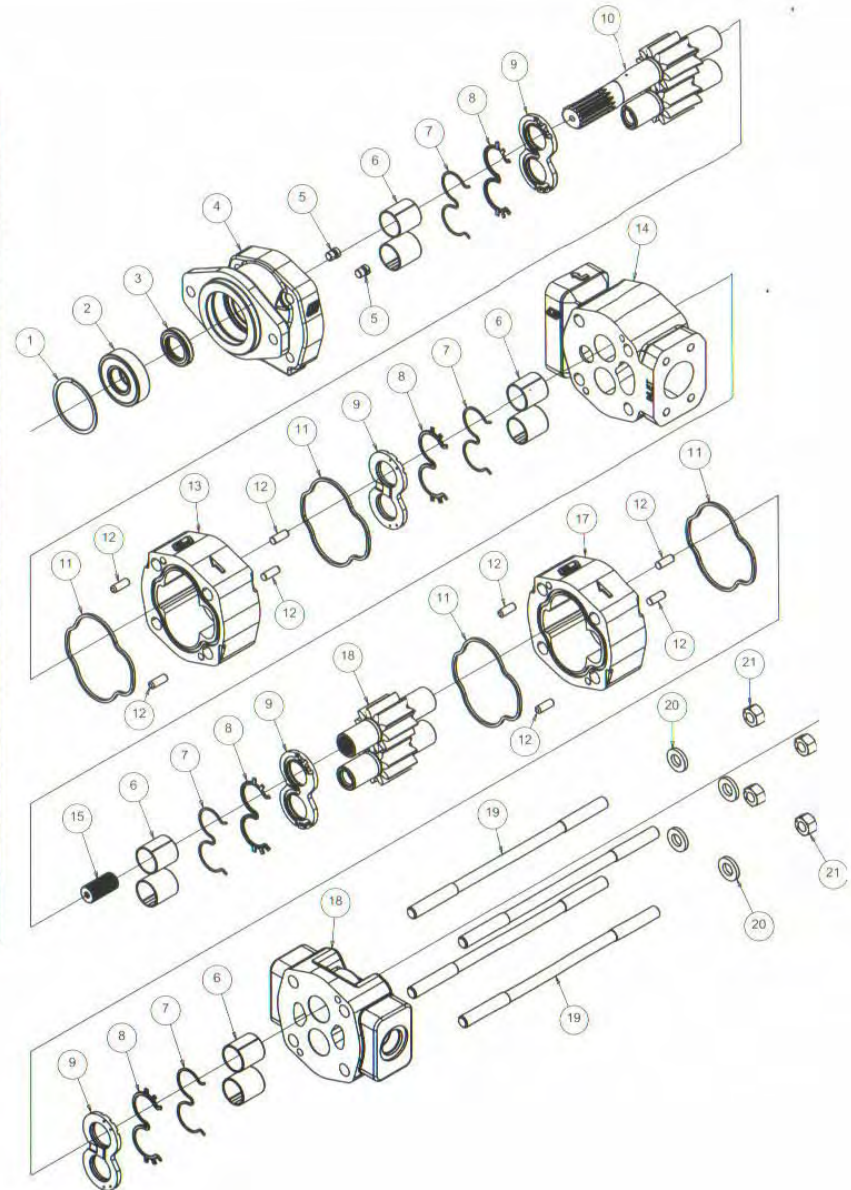
**Parker Hannifin Corporation**  
 Gear Pump Division  
 1775 Logan Avenue, Youngstown, OH 44501 USA  
 Tel: (330) 746-8011 • Fax: (330) 746-1148  
<http://www.parker.com/gearpump>

# PGP/PGM 350 Pumps and Motors

## PGP/PGM 350 Standard Parts List

Item No.	Description	Required	Ten Digit No. (TDN)
1	Snap Ring	1	391-2686-065
2	Outboard Bearing	1	391-0381-077
3	Seal – pump	1	391-2883-103
	Seal – motor	1	391-2883-115
4	Shaft End Cover	1	323-50XX-XXX*
5	Plug – pump	1	391-2286-004
5	Check – motor	2	391-3681-001
6	Bushings	4	391-0482-308
7	Seals – pump per section	2	391-2882-139 (back-up seal)
8		2	391-2882-140 (channel seal)
7	Seals – motor per section	2	391-2881-075 (back up seal)
8		4	391-2881-074 (end channel seal)
		4	391-2881-073 (side channel seal)
9	Thrust plates – pump	2	391-2185-957
	Thrust plates – motor	2	391-2185-968
10	Gear Set	1	323-29XX-XXX*
11	Gasket Seal – pump	2	391-2884-074
	Gasket Seal – motor	2	391-2884-021
12	Dowel Pins	4	391-2082-032
13	Gear Housing – pump	1	323-81XX-100*
	Gear Housing – motor	1	323-82XX-100*
14	Bearing Carrier	1	323-7XXX-XXX*
15	Connecting Shaft	1	323-1133-001
16	Gear Set	1	323-28XX-XXX*
17	Gear Housing – pump	1	323-81XX-100*
	Gear Housing – motor	1	323-82XX-100*
18	Port End Cover	1	323-30XX-XXX*
19	Studs or Capscrews		
	studs	4	391-1401-XXX*
	capscrews	4	391-1425-XXX*
20	Washers	4	391-3784-028
21	Nuts	4	391-1451-076

\* = Varies depending upon gear width and/or configuration



**Parker Hannifin Corporation**

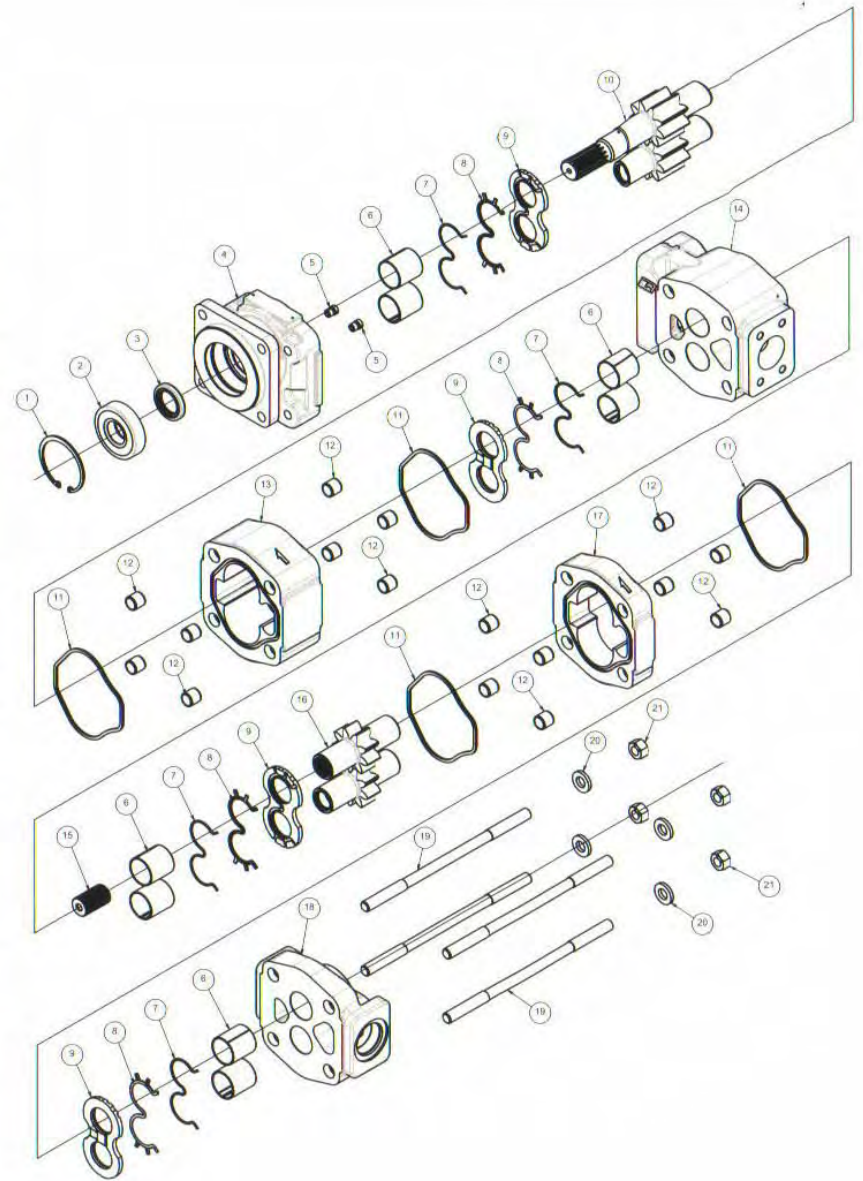
Gear Pump Division  
 1775 Logan Avenue, Youngstown, OH 44501 USA  
 Tel: (330) 746-8011 • Fax: (330) 746-1148  
<http://www.parker.com/gearpump>

# PGP/PGM 365 Pumps and Motors

## PGP/PGM 365 Standard Parts List

Item No.	Description	Required	Ten Digit No. (TDN)
1	Snap Ring	1	391-2686-025
2	Outboard Bearing	1	391-0381-078
3	Seal – pump	1	391-2883-052
	Seal – motor	1	391-2883-094
4	Shaft End Cover	1	322-50XX-XXX*
5	Checks – motor	2	391-3681-001
6	Bushings	4	391-0482-307
7	Seals – pump-per section	2	391-2183-177 (back-up seal)
8		2	391-2183-176 (channel seal)
7	Seals – motor-per section	2	391-2885-071 (back-up seal)
8		4	391-2885-070 (end channel seal)
		4	391-2885-069 (side channel seal)
9	Thrust plates – pump	2	391-2185-955
	Thrust plates – motor	2	391-2185-960
10	Gear Set	1	322-29XX-XXX*
11	Gasket Seal – pump	2	391-2884-052
	Gasket Seal – motor	2	391-2884-023
12	Dowel Pins – pump	8	391-2082-062
	Dowel Pins – Motor	4	391-2082-069
13	Gear Housing – pump	1	322-81XX-100*
	Gear Housing – motor	1	322-82XX-100*
14	Bearing Carrier	1	322-7XXX-XXX*
15	Connecting Shaft	1	322-1133-001
16	Gear Set	1	322-28XX-XXX*
17	Gear Housing – pump	1	322-81XX-100*
17	Gear Housing – motor	1	322-82XX-100*
18	Port End Cover	1	322-30XX-XXX*
19	Studs or Cap Screws		
	studs	4	391-1425-XXX*
20	Washers – pump	4	391-3784-028
	Washers – motor	4	391-3782-114
21	Nuts – pump	4	391-1451-076
	Nuts – motor	4	391-1451-086

\* = Varies depending upon gear width and/or configuration



**Parker Hannifin Corporation**  
 Gear Pump Division  
 1775 Logan Avenue, Youngstown, OH 44501 USA  
 Tel: (330) 746-8011 • Fax: (330) 746-1148  
<http://www.parker.com/gearpump>

# North America

101 Canterbury Road

**Kings Mountain NC 28086**

Phone: 704-730-2000

Fax: 704-730-5832

